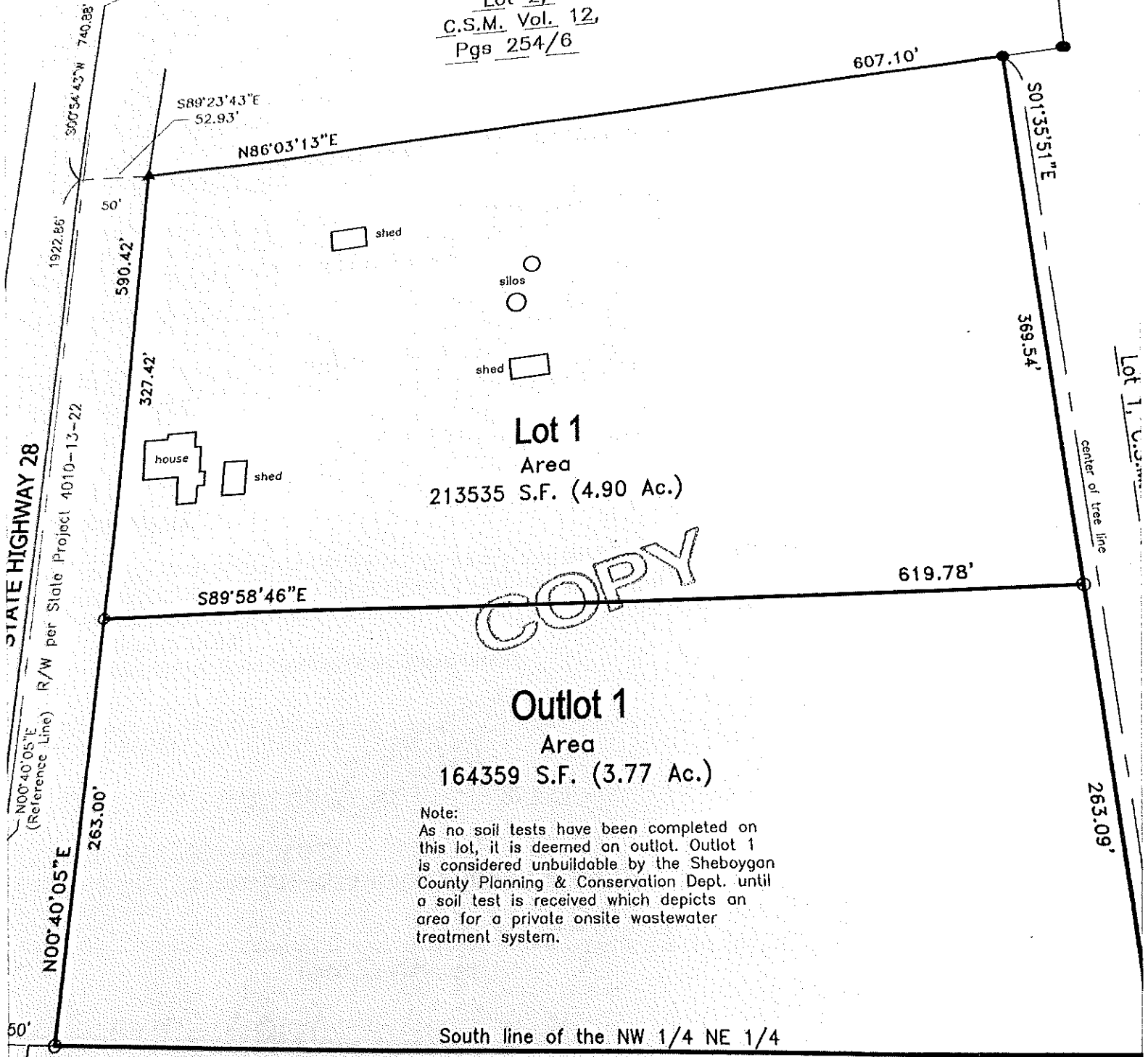


North 1/4 corner,
 Section 12,
 T13N-R20E,
 P.K. nail found

Lot 2,
C.S.M. Vol. 12,
Pgs 254/6



COPY

Lot 1
 Area
 213535 S.F. (4.90 Ac.)

Outlot 1
 Area
 164359 S.F. (3.77 Ac.)

Note:
 As no soil tests have been completed on this lot, it is deemed an outlot. Outlot 1 is considered unbuildable by the Sheboygan County Planning & Conservation Dept. until a soil test is received which depicts an area for a private onsite wastewater treatment system.

South line of the NW 1/4 NE 1/4

Unplatted lands

1/4 corner,
 12,
 20E,
 referenced to the
 the NE 1/4 of
 ing S00°54'43"W
 coordinate System)