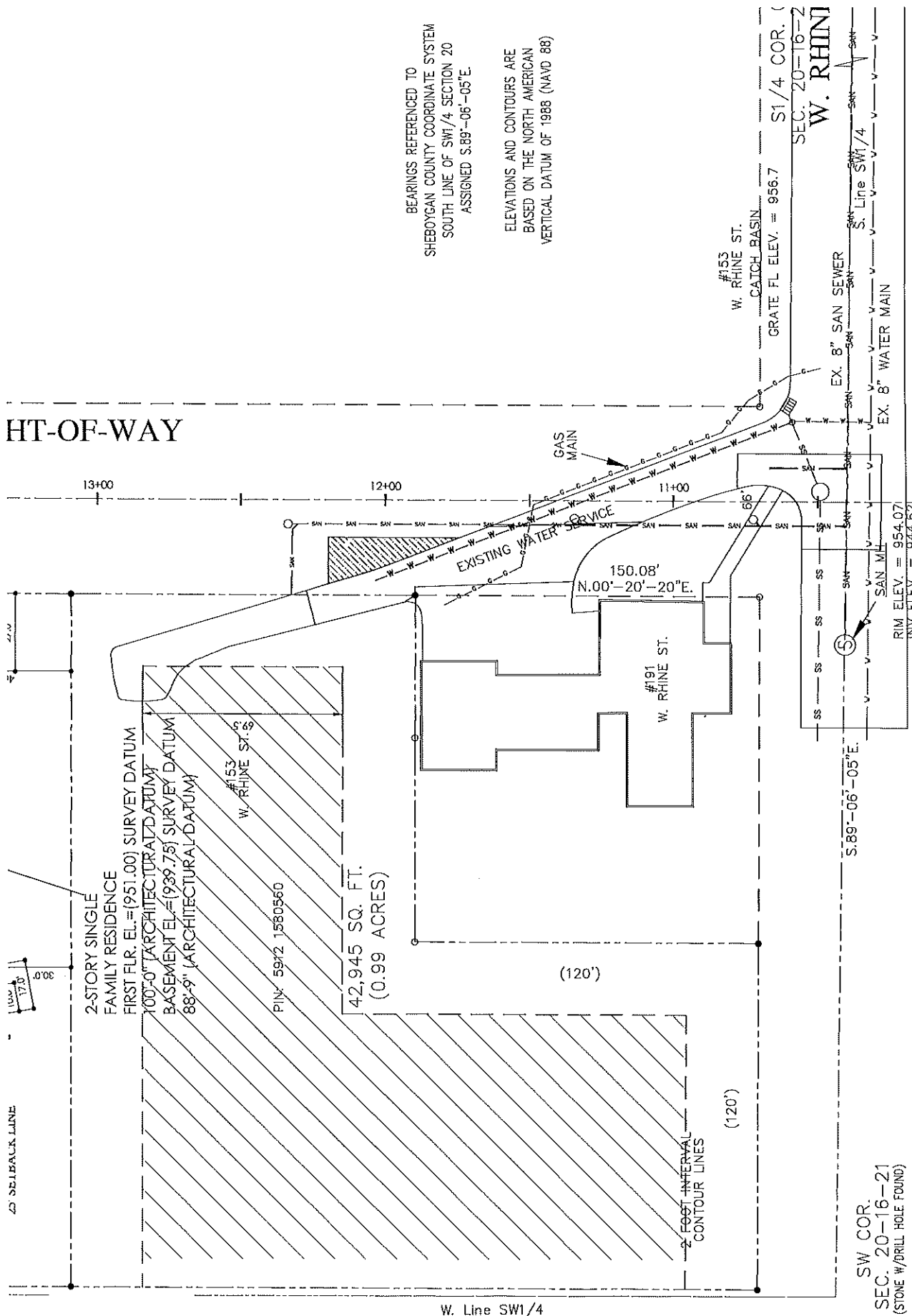


HT-OF-WAY



BEARINGS REFERENCED TO
SHEBOYGAN COUNTY COORDINATE SYSTEM
SOUTH LINE OF SW1/4 SECTION 20
ASSIGNED S.89°-06'-05"E.

ELEVATIONS AND CONTOURS ARE
BASED ON THE NORTH AMERICAN
VERTICAL DATUM OF 1988 (NAVD 88)

2-STORY SINGLE
FAMILY RESIDENCE
FIRST FLR. EL. = (951.00) SURVEY DATUM
100'-0" (ARCHITECTURAL DATUM)
BASEMENT EL. = (939.75) SURVEY DATUM
88'-9" (ARCHITECTURAL DATUM)

#153
W. RHINE ST. S

PIN: 5942 1580360

42,945 SQ. FT.
(0.99 ACRES)

#191
W. RHINE ST.

150.08'
N.00°-20'-20"E.

2 FOOT INTERVAL
CONTOUR LINES

#153
W. RHINE ST.
CATCH BASIN

GRATE FL ELEV. = 956.7

S1/4 COR. (SEC. 20-16-21)
W. RHINE

EX. 8" SAN SEWER

EX. 8" WATER MAIN

RIM ELEV. = 954.07
INV ELEV. = 944.62

S.89°-06'-05"E.

SW COR.
SEC. 20-16-21
(STONE W/DRILL HOLE FOUND)

W. Line SW1/4