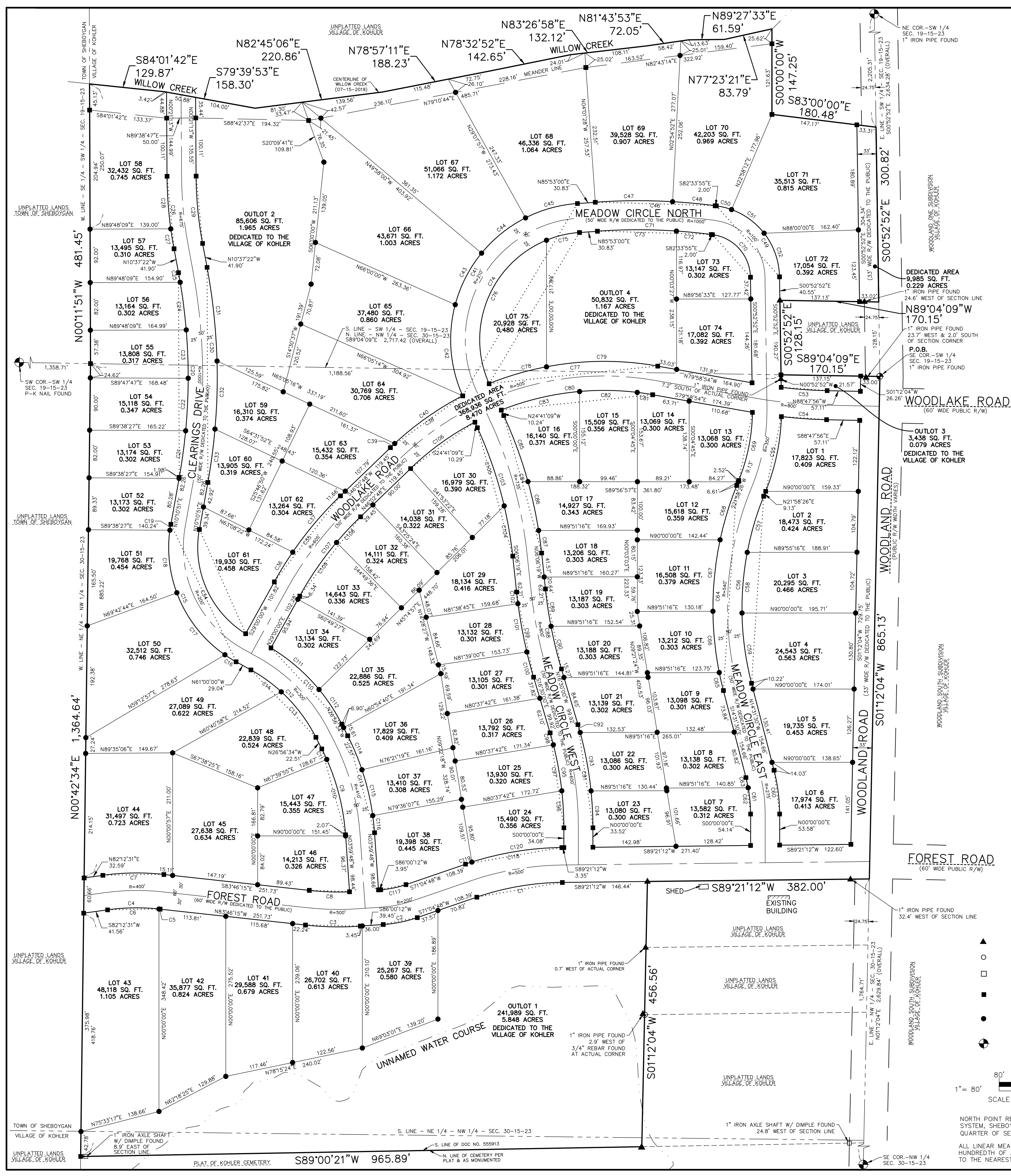


THE CLEARINGS - PHASE I

PART OF THE SOUTHEAST 1/4 OF THE SOUTHWEST 1/4 OF SECTION 19 AND
PART OF THE NORTHEAST 1/4 OF THE NORTHWEST 1/4 OF SECTION 30,
TOWNSHIP 15 NORTH, RANGE 23 EAST, IN THE VILLAGE OF KOHLER,
SHEBOYGAN COUNTY, WISCONSIN.

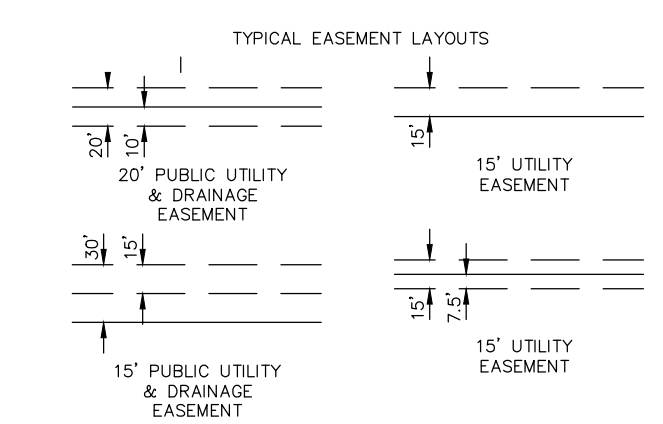
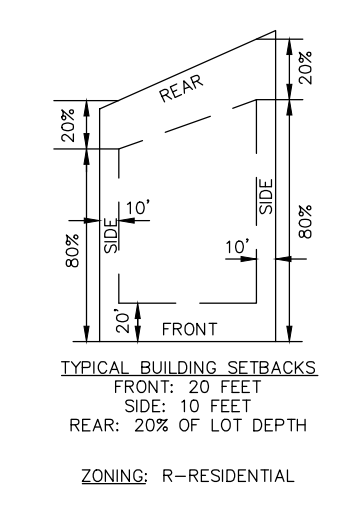
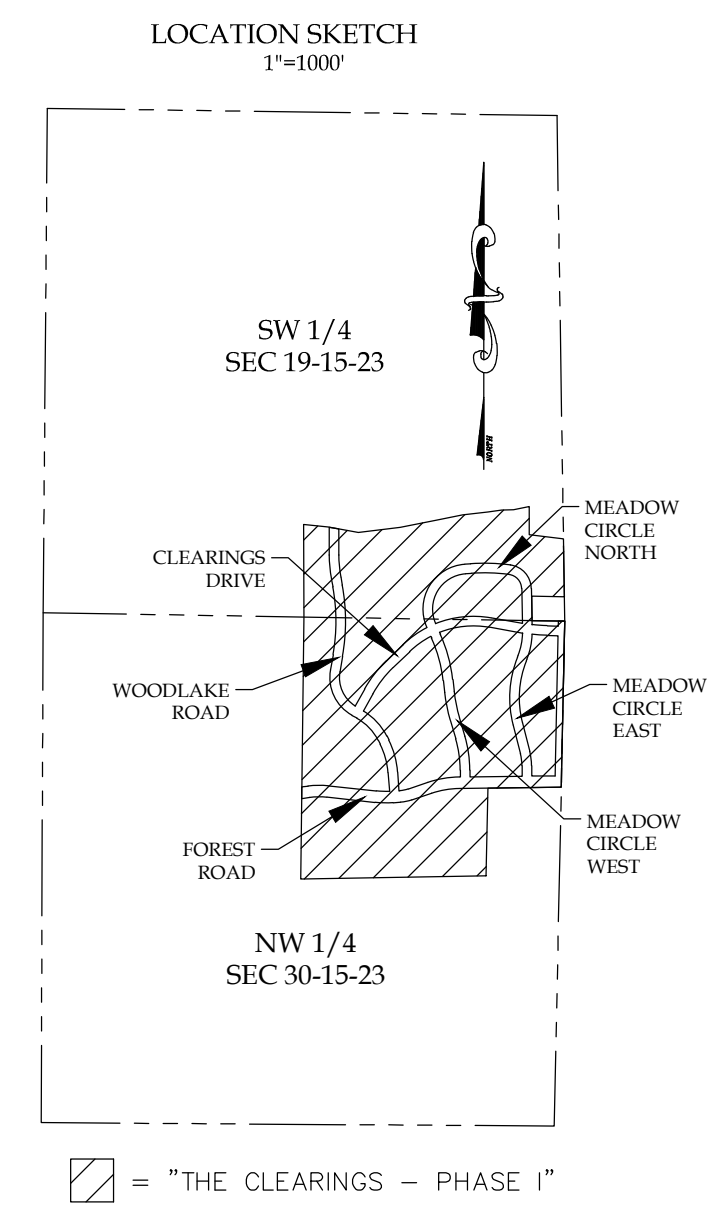


Curve Table									
Curve #	Radius	Length	Delta	Chord Direction	Chord Length	Tangent In	Tangent Out		
C1	470.00'	149.90'	01°16'24"	S80°13'00"W	149.26'	S89°21'12"W	S71°04'48"W		
C2	230.00'	59.91'	01°45'52"	S78°32'30"W	59.74'	S71°04'48"W	S86°00'12"W		
C3	530.00'	94.59'	01°01'33"	N88°53'02"W	94.47'	S86°00'12"W	N83°46'15"W		
C4	370.00'	90.54'	01°40'14"	S89°13'08"W	90.31'	N83°46'15"W	S82°12'31"W		
C5	370.00'	1.87'	00°01'25"	S83°54'58"E	1.87'	S83°46'15"E	S84°03'40"E		
C6	370.00'	88.67'	01°34'49"	S89°04'25"W	88.45'	N84°03'40"W	S82°12'31"W		
C7	430.00'	105.22'	01°40'14"	N89°13'08"E	104.96'	N82°12'31"E	S83°46'15"E		
C8	470.00'	69.38'	02°26'46"	S87°59'58"W	69.31'	S83°46'15"E	N87°46'19"E		
C9	385.00'	154.19'	02°26'46"	N15°28'11"W	153.16'	N03°59'48"W	N26°56'34"W		
C10	385.00'	134.27'	01°58'53"	N13°59'15"W	133.59'	N03°59'48"W	N23°58'41"W		
C11	385.00'	19.92'	00°25'53"	N25°23'17"W	19.92'	N23°58'41"W	N26°56'34"W		
C12	275.00'	163.46'	03°40'26"	N43°58'17"W	161.07'	N26°56'34"W	N61°00'00"W		
C13	275.00'	98.83'	02°03'53"	N37°14'19"W	98.30'	N26°56'34"W	N47°32'04"W		
C14	275.00'	64.63'	01°32'56"	N54°16'02"W	64.48'	N47°32'04"W	N61°00'00"W		
C15	225.00'	279.53'	07°10'51"	N25°24'34"W	261.89'	N61°00'00"W	N10°10'51"E		
C16	225.00'	22.69'	00°54'42"	N58°06'39"W	22.68'	N61°00'00"W	N55°13'18"W		
C17	225.00'	137.19'	03°45'03"	N37°45'17"W	135.07'	N55°13'18"W	N20°17'16"W		
C18	225.00'	109.31'	02°25'01"	N06°22'10"W	108.24'	N20°17'16"W	N07°32'57"E		
C19	225.00'	10.34'	00°23'55"	N68°51'54"E	10.33'	N07°32'57"E	N10°10'51"E		
C20	975.00'	354.02'	02°48'13"	N00°13'15"W	352.07'	N10°10'51"E	N10°37'22"W		
C21	975.00'	80.76'	00°44'44"	N07°48'29"E	80.73'	N10°10'51"E	N05°26'07"E		
C22	975.00'	90.57'	00°51'21"	N02°48'27"E	90.54'	N05°26'07"E	N00°06'46"E		
C23	975.00'	83.26'	00°45'33"	N02°20'01"W	83.24'	N00°06'46"E	N04°46'48"W		
C24	975.00'	82.64'	00°45'23"	N07°12'30"W	82.62'	N04°46'48"W	N09°38'11"W		
C25	975.00'	16.78'	00°59'11"	N10°07'46"W	16.78'	N09°38'11"W	N10°37'22"W		
C26	700.00'	125.46'	01°01'09"	N05°29'17"W	125.29'	N10°37'22"W	N00°21'13"W		
C27	700.00'	34.70'	00°25'02"	N09°12'10"W	34.69'	N10°37'22"W	N07°46'58"W		
C28	700.00'	90.76'	00°25'45"	N04°04'06"W	90.70'	N07°46'58"W	N00°21'13"W		
C29	650.00'	116.50'	01°01'09"	S05°29'17"E	116.34'	S00°21'13"E	S10°37'22"E		
C30	1025.00'	372.17'	02°48'13"	S00°13'15"E	370.13'	S10°37'22"E	S10°10'51"E		
C31	1025.00'	162.39'	00°40'43"	S06°05'03"E	162.22'	S10°37'22"E	S10°32'44"E		
C32	1025.00'	117.19'	00°53'30"	S01°34'47"W	117.13'	S01°32'44"E	S00°00'19"W		
C33	1025.00'	104.40'	00°51'03"	S07°35'35"W	104.36'	S00°00'19"W	S10°10'51"E		
C34	175.00'	208.31'	06°48'12"	S23°55'11"E	196.23'	S10°10'51"E	S58°01'13"E		
C35	630.00'	187.44'	01°02'48"	N37°31'24"E	186.75'	N29°00'00"E	N46°02'48"E		
C36	630.00'	60.25'	00°52'48"	N31°44'24"E	60.23'	N29°00'00"E	N34°28'48"E		
C37	630.00'	127.18'	01°13'40"	N40°15'48"E	126.97'	N34°28'48"E	N46°02'48"E		
C38	630.00'	153.72'	01°37'04"	N54°21'20"E	153.18'	N46°02'48"E	N62°39'52"E		
C39	530.00'	10.27'	00°06'36"	N46°38'06"E	10.27'	N46°02'48"E	N47°09'24"E		
C40	530.00'	143.45'	01°53'02"	N54°54'38"E	143.01'	N47°09'24"E	N62°39'52"E		
C41	235.00'	451.69'	11°07'38"	N30°49'11"E	385.30'	N24°14'38"W	N85°53'00"E		
C42	235.00'	160.40'	03°06'28"	N04°41'24"W	157.31'	N24°14'38"W	N14°51'50"E		
C43	235.00'	100.36'	02°28'11"	N27°05'55"E	99.60'	N14°51'50"E	N39°20'00"E		
C44	235.00'	97.69'	03°29'00"	N51°14'32"E	96.99'	N39°20'00"E	N63°09'04"E		
C45	235.00'	93.24'	02°24'39"	N74°31'02"E	92.63'	N63°09'04"E	N85°53'00"E		
C46	1025.00'	206.65'	01°13'05"	S88°20'27"E	206.30'	N85°53'00"E	S82°33'55"E		
C47	1025.00'	133.16'	00°26'36"	N89°36'18"E	133.07'	N85°53'00"E	S86°40'24"E		
C48	1025.00'	73.49'	00°40'26"	S84°37'09"E	73.47'	S86°40'24"E	S82°33'55"E		
C49	125.00'	178.21'	08°14'03"	S41°43'23"E	163.49'	S82°33'55"E	S00°52'42"E		
C50	125.00'	127.17'	01°22'11"	S76°20'19"E	127.11'	S82°33'55"E	S70°06'44"E		
C51	125.00'	70.10'	03°20'54"	S54°02'47"E	69.19'	S70°06'44"E	S37°58'50"E		
C52	125.00'	80.94'	03°20'58"	S19°25'51"E	79.53'	S37°58'50"E	S00°52'42"E		
C53	775.00'	79.40'	00°52'41"	S85°51'51"E	79.36'	S82°55'45"E	S88°47'56"E		
C54	825.00'	77.95'	00°52'49"	N86°05'32"W	77.92'	N88°47'56"W	N83°23'07"W		
C55	375.00'	132.10'	02°01'00"	S11°52'58"W	131.42'	S01°47'26"W	S21°58'26"W		
C56	515.00'	328.07'	03°29'58"	S03°43'28"W	322.55'	S21°58'26"W	S14°31'30"E		
C57	515.00'	100.79'	01°12'24"	S16°22'01"W	100.63'	S21°58'26"W	S10°45'37"W		
C58	515.00'	105.00'	01°14'05"	S04°55'10"W	104.82'	S10°45'37"W	S00°55'18"E		
C59	515.00'	122.27'	01°33'12"	S07°43'24"E	121.99'	S00°55'18"E	S14°31'30"E		
C60	300.00'	76.05'	01°43'30"	S07°15'45"E	75.85'	S14°31'30"E	S00°00'00"E		

Curve Table								
Curve #	Radius	Length	Delta	Chord Direction	Chord Length	Tangent In	Tangent Out	
C61	250.00'	63.38'	01°43'30"	N07°15'45"W	63.21'	N00°00'00"E	N14°31'30"W	
C62	250.00'	45.32'	01°02'31"	N05°11'35"W	45.26'	N00°00'00"E	N10°23'10"W	
C63	250.00'	18.06'	00°48'20"	N12°27'20"W	18.05'	N10°23'10"W	N14°31'30"W	
C64	565.00'	359.92'	03°29'56"	N03°43'28"E	353.86'	N14°31'30"W	N21°58'26"E	
C65	565.00'	31.79'	00°31'25"	N12°54'47"W	31.79'	N14°31'30"W	N11°18'04"W	
C66	565.00'	106.14'	01°05'49"	N05°55'10"W	105.99'	N11°18'04"W	N00°32'15"W	
C67	565.00'	123.87'	01°23'40"	N00°44'35"E	123.62'	N00°32'15"W	N12°01'25"E	
C68	565.00'	98.12'	00°59'51"	N16°59'55"E	98.00'	N12°01'25"E	N21°58'26"E	
C69	325.00'	120.25'	02°12'00"	N11°22'26"E	119.57'	N12°58'26"E	N09°46'26"E	
C70	75.00'	106.92'	08°14'03"	N41°43'23"W	98.10'	N00°52'52"W	N82°33'55"W	
C71	975.00'	196.57'	01°13'05"	N86°20'27"W	196.24'	N82°33'55"W	S85°53'00"W	
C72	975.00'	60.34'	00°32'46"	N84°20'18"W	60.33'	N82°33'55"W	N86°06'41"W	
C73	975.00'	136.23'	00°08'09"	S89°53'10"W	136.11'	N86°06'41"W	S85°53'00"W	
C74	185.00'	355.25'	11°01'20"	S30°52'03"W	303.13'	S85°53'00"W	S24°08'20"E	
C75	185.00'	98.56'	01°08'12"	S76°48'54"W	98.32'	S85°53'00"W	S67°44'48"W	
C76	185.00'	296.69'	09°15'09"	S21°48'14"W	265.90'	S67°44'48"W	S24°08'20"E	
C77	530.00'	295.81'	03°15'48"	N82°02'42"E	291.70'	N68°04'18"E	S79°58'54"W	
C78	530.00'	103.09'	01°08'41"	N73°38'39"E	102.93'	N68°04'18"E	N79°12'59"E	
C79	530.00'	192.42'	02°04'07"	N89°37'03"E	191.37'	N79°12'59"E	S79°58'54"E	
C80	480.00'	265.23'	03°19'36"	S84°11'18"W	261.87'	N79°58'54"W	S68°21'30"W	
C81	480.00'	26.77'	00°31'45"	N81°34'47"W	26.77'	N79°58'54"W	N83°10'39"W	
C82	480.00'	99.44'	01°52'09"	N89°06'44"W	99.26'	N83°10'39"W	S84°57'12"W	
C83	480.00'	139.03'	01°35'42"	S76°39'21"W	138.54'	S84°57'12"W	S68°21'30"W	
C84	760.00'	246.46'	01°34'50"	S15°23'44"E	245.38'	S24°41'09"E	S68°06'19"E	
C85	760.00'	121.28'	00°08'35"	S20°06'51"E	121.15'	S24°41'09"E	S19°32'34"E	
C86	760.00'	86.04'	00°29'11"	S12°17'59"E	85.99'	S19°32'34"E	S09°03'23"E	
C87	760.00'	39.15'	00°25'05"	S07°34'51"E	39.14'	S09°03'23"E	S06°06'19"E	
C88	775.00'	140.60'	01°02'31"	S11°18'09"E	140.41'	S06°06'19"E	S16°30'00"E	
C89	775.00'	64.91'	00°44'56"	S08°30'17"E	64.89'	S06°06'19"E	S07°31'00"W	
C90	775.00'	75.69'	00°35'45"	S13°42'08"E	75.66'	S10°54'15"E	S16°30'00"E	
C91	625.00'	179.99'	01°36'00"	S08°15'00"E	179.37'	S16°30'00"E	S07°31'00"W	
C92	625.00'	14.09'	00°17'31"	S15°51'14"E	14.09'	S16°30'00"E	S15°12'29"E	
C93	625.00'	102.40'	00°23'14"	S10°30'52"E	102.28'	N00°51'29"E	S05°49'15"E	
C94	625.00'	63.48'	00°49'15"	S02°54'37"E	63.47'	S05°49'15"E	S00°00'00"E	
C95	575.00'	165.59'	01°30'00"	N08°15'00"W	165.02'	N00°00'00"E	N16°30'00"W	
C96	575.00'	63.65'	00°20'34"	N03°10'17"W	63.62'	N00°00'00"E	N06°20'34"W	
C97	575.00'	80.61'	00°01'57"	N10°21'32"W	80.55'	N06°20'34"W	N14°22'31"W	
C98	575.00'	21.32'	00°07'29"	N15°26'15"W	21.32'	N14°22'31"W	N16°30'00"W	
C99	825.00'	149.67'	01°02'31"	N11°18'09"W	149.47'	N16°30'00"W	N06°06'19"E	
C100	825.00'	45.06'	00°30'74"	N14°56'07"W	45.06'	N16°30'00"W	N13°22'14"W	
C101	825.00'	84.29'	00°55'14"	N10°26'37"W	84.25'	N13°22'14"W	N07°33'00"W	
C102	825.00'	20.32'	01°24'41"	N06°48'40"W	20.32'	N07°33'00"W	N06°06'19"E	
C103	710.00'	230.25'	01°34'50"	N15°23'44"W	229.24'	N06°06'19"E	N24°41'09"W	
C104	710.00'	87.64'	00°70'24"	N09°38'29"W	87.58'	N10°13'19"W	N10°31'39"W	
C105	710.00'	142.61'	01°13'20"	N18°55'54"W	142.37'	N16°31'39"W	N24°41'09"W	
C106	480.00'	136.90'	01°02'27"	S54°31'20"W	136.43'	S62°23'14"W	S46°02'48"W	
C107	580.00'	172.56'	01°26'48"	S37°31'24"W	171.95'	S46°02'48"W	S29°00'00"W	
C108	580.00'	60.64'	00°59'25"	S43°03'05"W	60.61'	S46°02'48"W	S40°32'22"W	
C109	580.00'	111.92'	01°10'32"	S34°31'41"W	111.75'	S40°32'22"W	S29°00'00"W	
C110	325.00'	181.32'	03°19'57"	S42°53'33"E	178.98'	S58°54'32"E	S26°56'34"E	
C111	325.00'	109.87'	01°22'12"	S49°31'26"E	109.35'	S58°54'32"E	S39°32'19"E	
C112	325.00'	71.45'	01°23'45"	S33°14'27"E	71.30'	S39°32'19"E	S26°56'34"E	
C113	435.00'	174.21'	02°26'46"	S15°28'11"E	173.05'	S26°56'34"E	S03°49'48"E	
C114	435.00'	63.57'	00°28'22"	S22°26'33"E	63.51'	S26°56'34"E	S18°34'12"E	
C115	435.00'	81.09'	01°04'50"	S13°13'47"E	80.97'	S18°34'12"E	S07°32'22"E	
C116	435.00'	29.55'	00°35'33"	S05°56'35"E	29.55'	S07°32'22"E	S03°49'48"E	
C117	170.00'	44.28'	01°45'54"	N78°32'30"E	44.15'	N86°00'12"E	N71°04'48"E	
C118	530.00'	116.03'	01°16'24"	N80°13'00"E	168.32'	N71°04'48"E	N89°12'12"E	
C119	530.00'	169.40'	00°41'20"	N79°14'58"E	114.46'	N71°04'48"E	N72°19'08"E	
C120	530.00'	157.57'	01°70'20"	N80°50'10"E	156.99'	N72°19'08"E	N89°12'12"E	

THE CLEARINGS - PHASE I

PART OF THE SOUTHEAST 1/4 OF THE SOUTHWEST 1/4 OF SECTION 19 AND
PART OF THE NORTHEAST 1/4 OF THE NORTHWEST 1/4 OF SECTION 30,
TOWNSHIP 15 NORTH, RANGE 23 EAST, IN THE VILLAGE OF KOHLER,
SHEBOYGAN COUNTY, WISCONSIN.



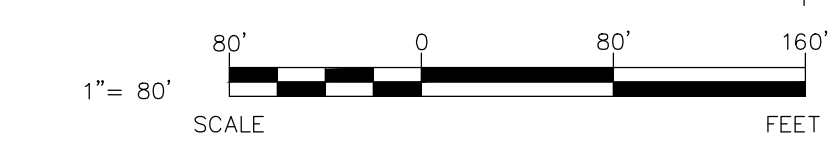
There are no objections to this plat with respect to
Secs. 236.15, 236.16, 236.20 and 236.21(1) and (2),
Wis Stats. as provided by s. 236.12, Wis. Stats.

Certified _____, 20____

Department of Administration



ISSUED DATE: JUNE 5, 2019
REVISED: JULY 15, 2019



NORTH POINT REFERENCED TO THE WISCONSIN COUNTY COORDINATE
SYSTEM, SHEBOYGAN COUNTY. THE EAST LINE OF THE SOUTHWEST
QUARTER OF SECTION 19 HAS A BEARING OF S00°52'52"E.

ALL LINEAR MEASUREMENTS HAVE BEEN MADE TO THE NEAREST ONE
HUNDREDTH OF A FOOT. ALL ANGULAR MEASUREMENTS HAVE BEEN MADE
TO THE NEAREST SECOND AND COMPUTED TO HALF-SECONDS.

EXCEL
ENGINEERING & SURVEYING GROUP
PROJECT NO. 1845440

Always a Better Plan
100 CAMBLOT DRIVE
FOND DU LAC, WI 54601
PHONE: (920) 926-9600
FAX: (920) 926-9601

